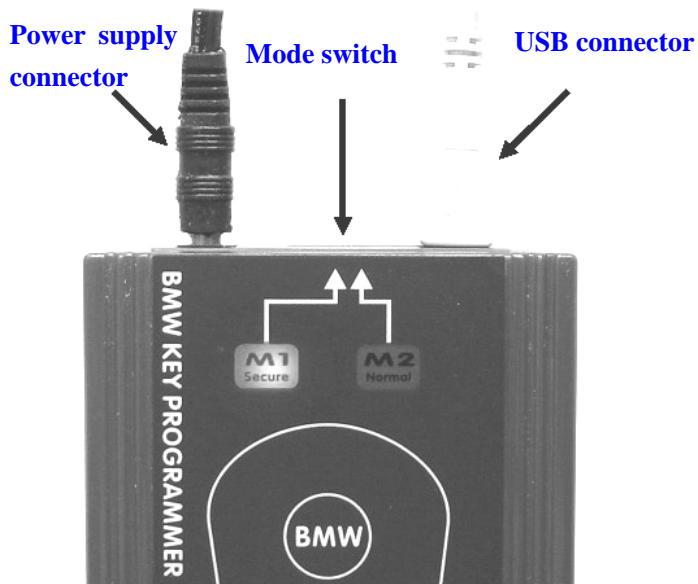


# Instruction

## Part One: Install hardware

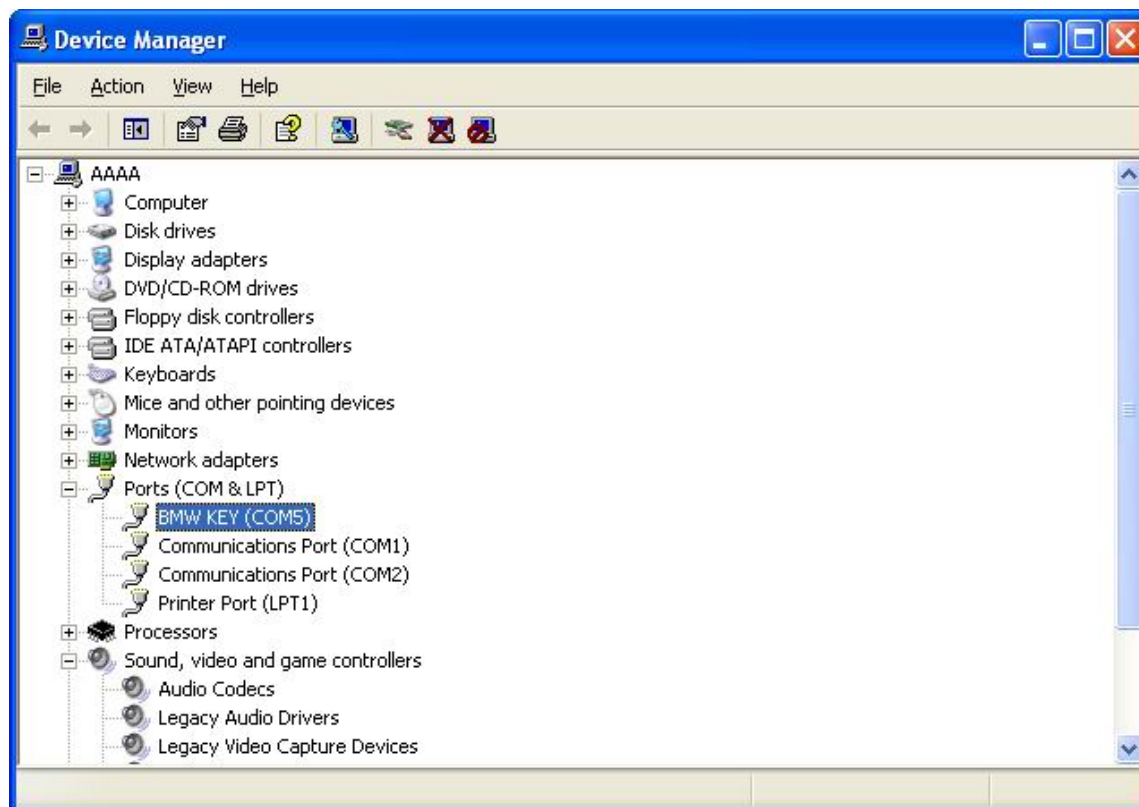
Connect with DC-12V power supply, turn the Mode switch to M1, the indicator light is on, connect the device and PC by USB line. As below picture:



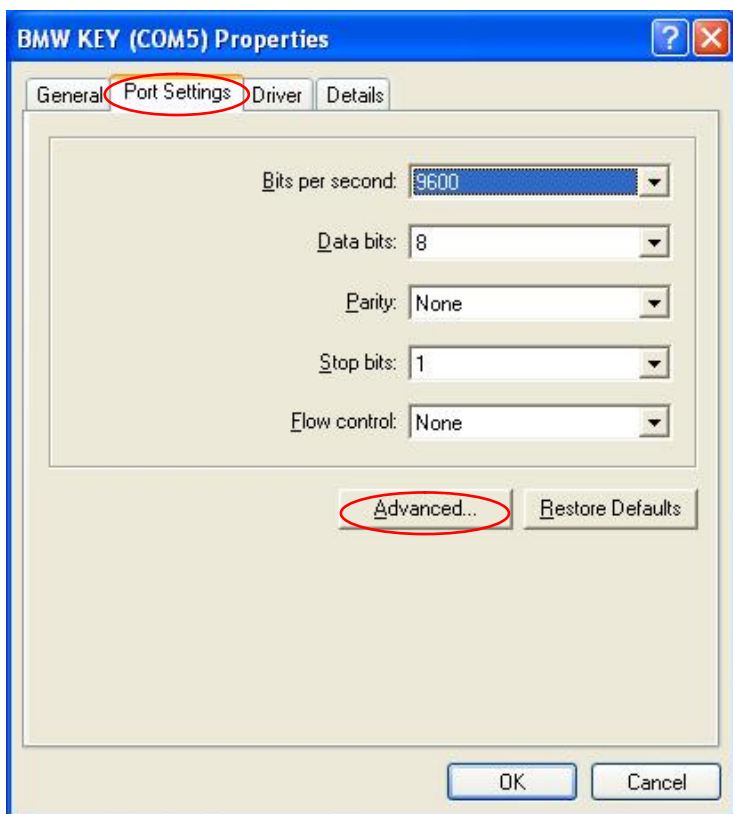
## Part Two: Port setting

If the Serial Port Number is greater than COM4, you must choose the port in COM1-COM4.

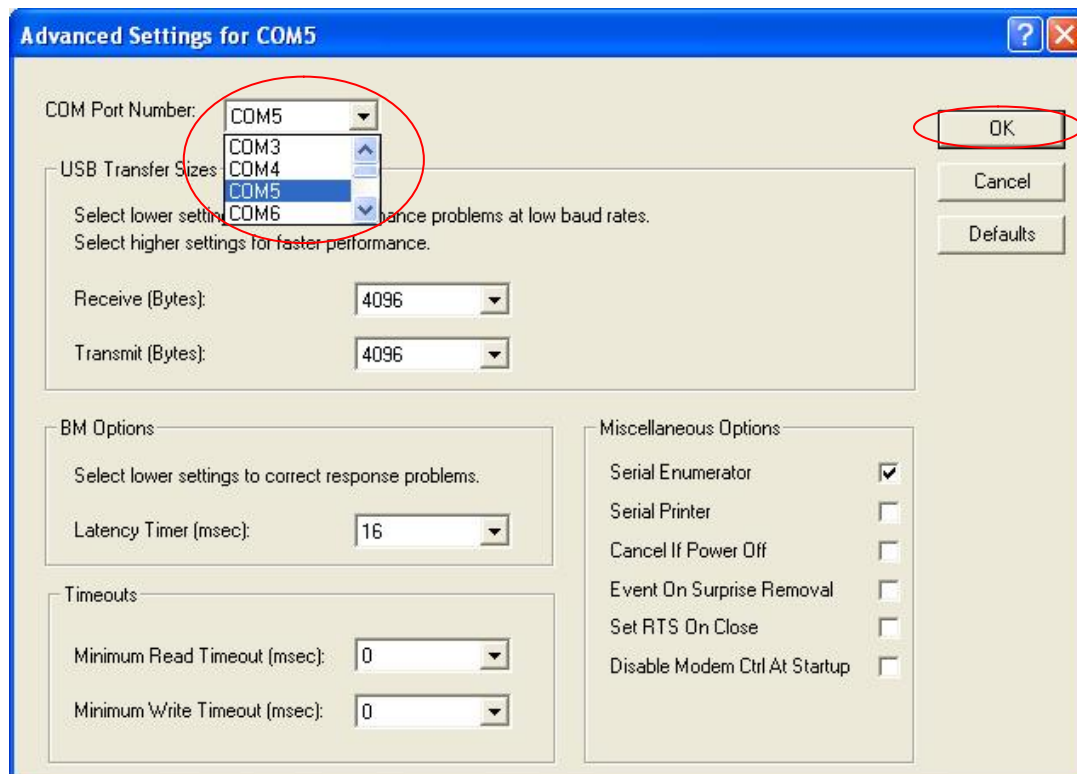
Go to [Device Manager], it shows as below:



Choose [BMW KEY (COM5)], right click choose Properties, it shows as below:



Go to [Port Settings] panel, then click [Advanced...], it shows as below: Choose one COM Port Number (COM1-COM4), and then click OK to finish the operation.

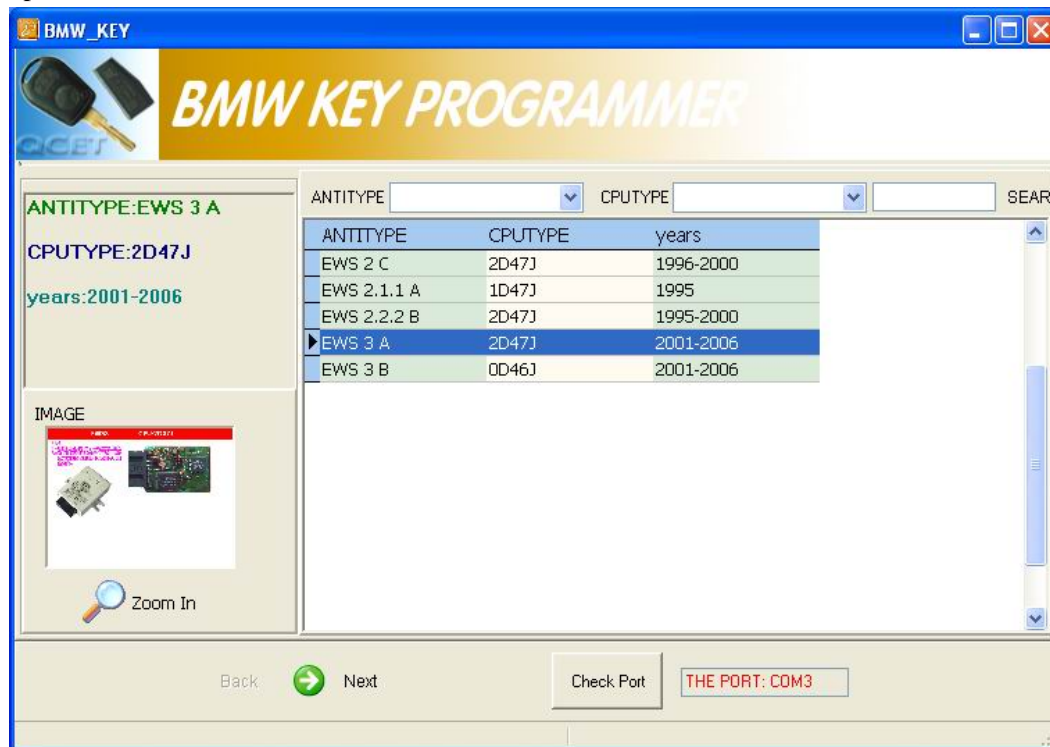


## Part Three: Operations

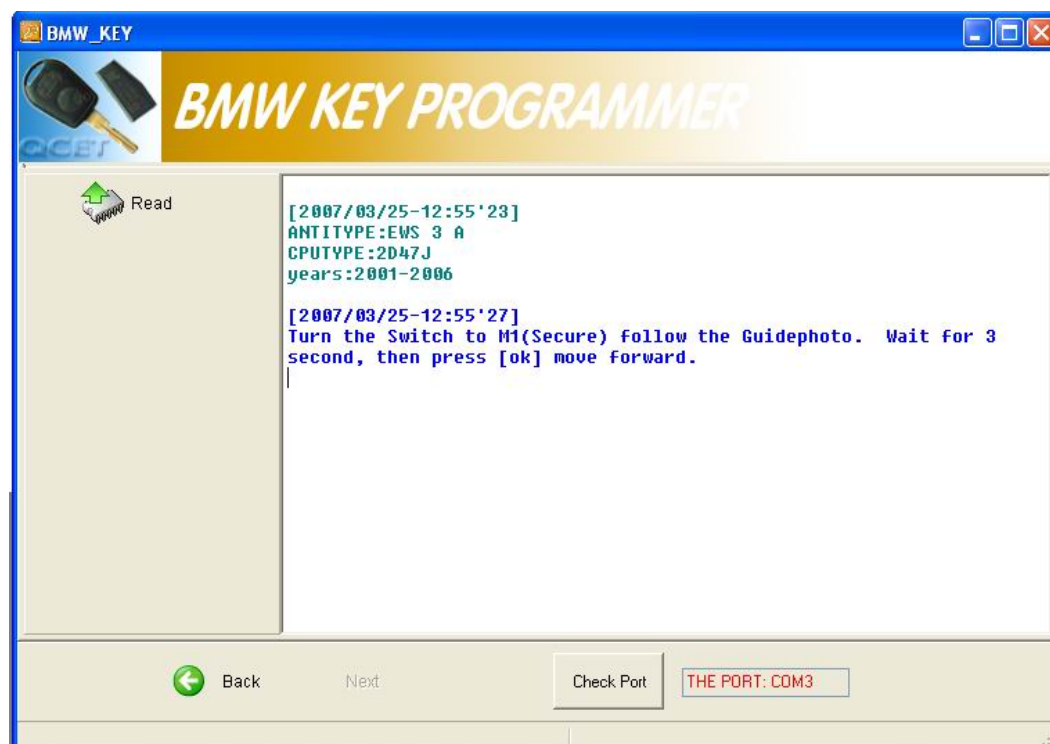
**Key Programmer principle:** Use the device to read the data of EWS (anti-thief control box), then write the data into a new key or key-chip. Please note, a key or key-chip can be written just once, can not be rewritten. That means the old key can not be programmed again. The key or key-chip which you want to be programmed must be new.

### 1. M1 (secure) mode

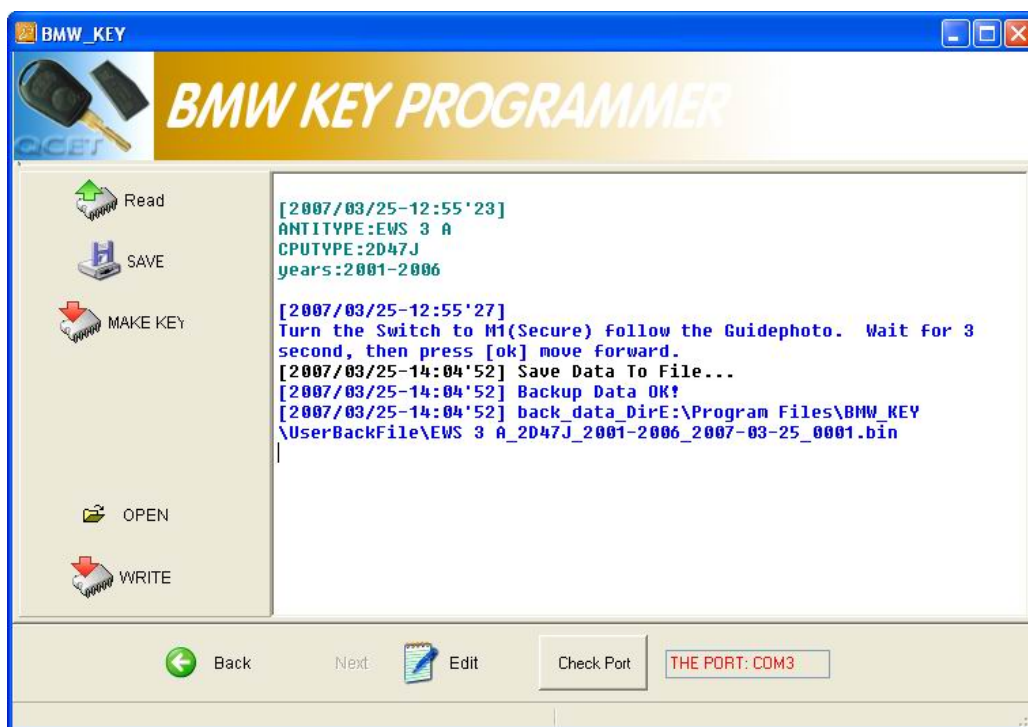
Take the "EWS 3 A" of mask 2D47J as an example. Select this type then click [Zoom in], follow the related operations, click [Next]. As below shows:



Software will remind you switch to M1 mode, the red indicator light should light now, then click [OK] turn into following screen:



Click [Read], then SAVE data, please mark down the save path, usually the default save path is C:\Program Files\BMW\_KEY\UserBackfile. Please also memorize the file name, such as [EWS 3 A\_2D47J\_2001-2006\_2007-03-23\_0006.BIN]. Save the data then click [MAKE KEY], now it will display as below. In addition, [Open] and [Write] button is used for writing or other purpose by well-informed user. So these two buttons are out of the scope of regular operation.



Operation steps: Switch to M2 mode, the M2 indicator light should light.

The first step: Choose the right COM port (COM1-COM4).

The second step: Input the key serial number (0~9), recommend input upward of number 4.

The third step: Open the Key matching file. Find the file on original save path, usually on path C:\Program Files\BMW\_KEY\UserBackFile. Click [Open].

The fourth step: Put the new key or key-chip on the inductive area properly, then click [Insert and program Keys].

